



by **GTT**

The background of the entire page is a close-up photograph of blue ocean waves, showing the texture and movement of the water.

Digital Solutions for Smart Ships

Our solutions for sustainable ships

Our mission is to deliver innovative solutions for ship owners, operators, and charterers worldwide, supporting all vessel types. We provide decision-support software, data collection systems, sensors, and expert consulting to enhance efficiency and sustainability. With deep maritime expertise and a collaborative approach, we help our clients achieve operational excellence. Our digital solutions optimise ship performance, weather routing, LNG cargo management, OSV operations, and bunkering, ensuring a seamless experience.

PERFORMANCE

Voyage management



Performance monitoring



Transparency



Performance optimisation



Reporting & Compliance



SENSORS



LNG CARGO & FUEL

Onboard monitoring



Boil-off modules



Sloshing modules



Safety



WHY US?



Turnkey & end-to-end

Sensors, web application, API, experts



Flexible

Noon reports & autologged data
From in-house or 3rd party APIs



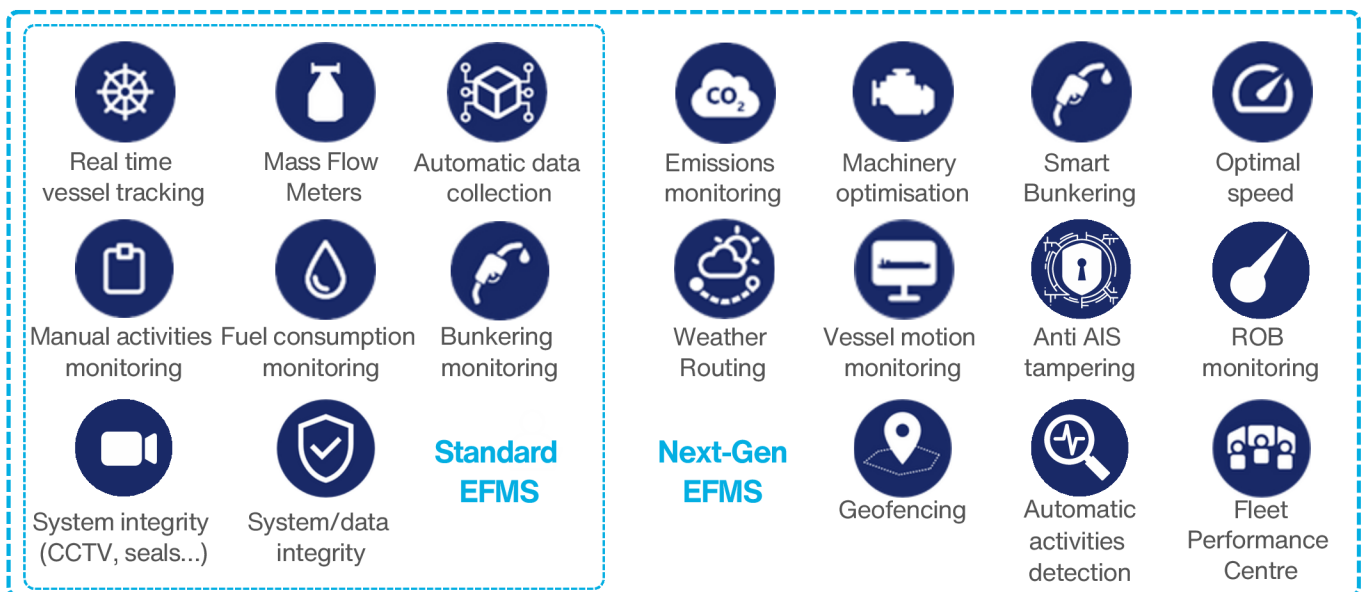
20+ years experience

120+ passionate employees
3000+ ships equipped

Electronic Fuel Monitoring Solution



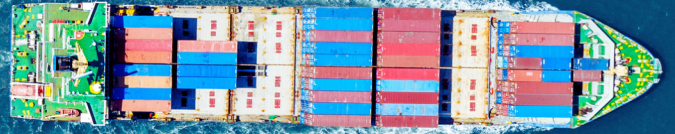
Our EFMS is an independent, tamper-proof, automated energy monitoring solution. It helps customers achieve measurable goals to optimise efficiency, cut emissions, and improve economic performance. The system integrates onboard applications, sensors, and cloud-based platforms with AI and expert oversight. With seamless API interfaces, it connects to customer servers for robust, real-time data management.



Key benefits






- **Real-time vessel and fleet tracking:** Gain immediate insights into fleet and individual vessel performance, enabling proactive decision-making.
- **Fuel malpractices prevention and detection:** Advanced sensors and monitoring prevent fuel loss, safeguarding resources and reducing costs.
- **Enhanced operational efficiency through activities monitoring:**
 - Ensures fuel is used for productive tasks only.
 - Validates crew-reported activities with AI-driven automatic detection.
 - Supports fleet activity analysis for potential ship overcapacity identification.
- **Machinery optimisation for GHG savings:** Optimised machinery operations help reduce greenhouse gas emissions while minimising operational costs.
- **Accurate emissions monitoring:** Compliant and automated emissions data collection aids in accurate reporting and regulatory compliance.

Vessel Performance Optimisation



VESPER is a performance tool that turns data into decision support, helping ship owners and charterers monitor, optimise, and manage fleets. It enhances maintenance, cost-efficiency, and regulatory compliance for peak vessel performance.

Key features

-  **Fleet tracking:** Monitor operations in real-time to compare vessel performance and support maintenance planning
-  **Added resistance:** Evaluate added resistance automatically updated from ship's data (noon reports and/or autolog) in relationship with ship operations and cleaning events.
-  **Scenario:** Run simulations to test operational strategies by optimising TCE and increase commercial performance based on actual ship's condition.
-  **Compliance:** Automated IMO DCS, EU MRV, EU ETS, and Fuel EU reports ensure compliance with stringent environmental regulations.
-  **Crew feedback:** Enable interactive dashboards for crew members to track performance KPIs and allow them identifying issues in reported data.

Key benefits

- **Fleet visibility:** Immediate access to operational insights across the fleet supports quicker, more informed decisions.
- **Cost-efficient performance monitoring:** Reduce operational costs through precise management of fuel, CO2, and equipment.
- **Enhanced condition-based maintenance:** Improve dry-docking and maintenance plans by monitoring engine, hull, and propeller performance, enhancing vessel longevity and efficiency.
- **Sustainability and compliance:** Simplified environmental reporting and real-time emissions tracking promote sustainable operations and regulatory adherence.

Additional optimisation features

Fleet Centre: Fleet map with weather forecasts and key vessel's information.

Dashboard: Customisable dashboards ensuring access to all ship's data, manual and autologged.

Event Centre: Customisable alert engines focused on deviation detections that can trigger notifications.

Trim: Trim optimisation leveraging trim tables, saving potential tracking.

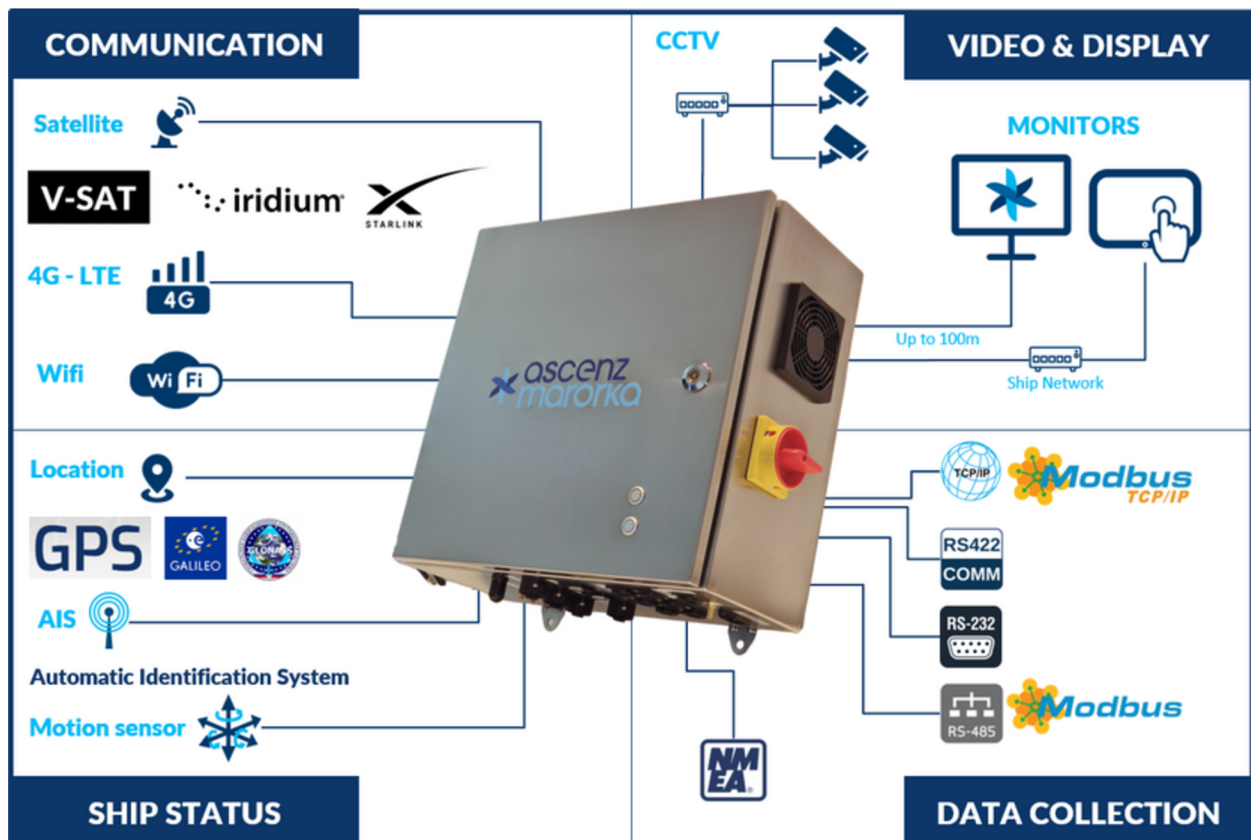
Machinery: Optimised machinery usage based on auxiliaries baselines, saving potential tracking.

Data Acquisition System

Our latest Data Acquisition System (DAS), engineered specifically for maritime applications.

Key features

- **Dimensions:** Compact stainless-steel enclosure of 400x400x200mm.
- **Connectivity:** Designed to gather data from any vessel through various communication protocols.
- **Communication:** Designed to transfer data to shore through ship VSAT or various independent solutions



Key benefits

- **Unique DAS:** The device and applications are the central point for all onboard Ascenz Marorka products.
- **Flexibility:** Based on its compact design, the DAS can be installed on any vessel of any size.
- **Ship environment:** In addition of onboard data collection, it can collect ship's environment data such as location of surrounding ships through AIS signal and ship motion.

**Our offices and distributor network
are close to you, wherever you are.**



contact@ascenzmarorka.com
www.ascenzmarorka.com



info@vpsolutions.dk
www.vpsolutions.dk

